

ABIES  Austria
Holzverarbeitung GmbH



ABIES Austria
Holzverarbeitung GmbH
A-4664 Oberweis Nr. 401



tel: +43 7612 63777
fax: +43 7612 63777-7

abies@abies-austria.at
www.abies-austria.at



- | | |
|--------------------|-----------------------|
| ■ Founded: | 2006 |
| ■ Product: | KVH |
| ■ Timber Species: | Spruce, Douglas-Fir |
| ■ Annual capacity: | 150.000 cbm |
| ■ Turnover 2008: | 18.000.000,- € |
| ■ Area: | 55.000 m ² |
| ■ Employees: | 40 |

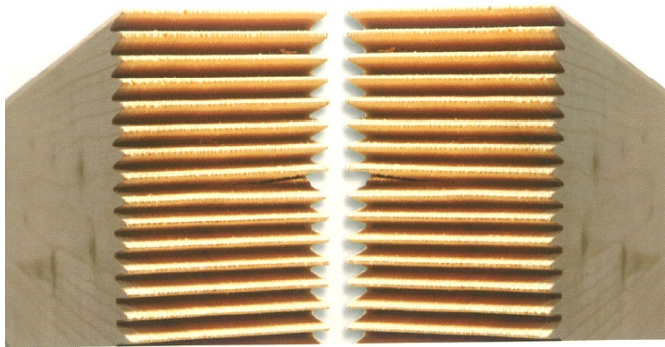


Günter Hessenberger
Production

1982 – 2005
UPM-Säge Steyermühl
Produktionsleiter

Andreas Maxwald
Sales & Administration

1990-1995 Säge Rumpmayr
1995-2005 UPM-Säge Steyermühl
Prokurist & Verkaufsleiter

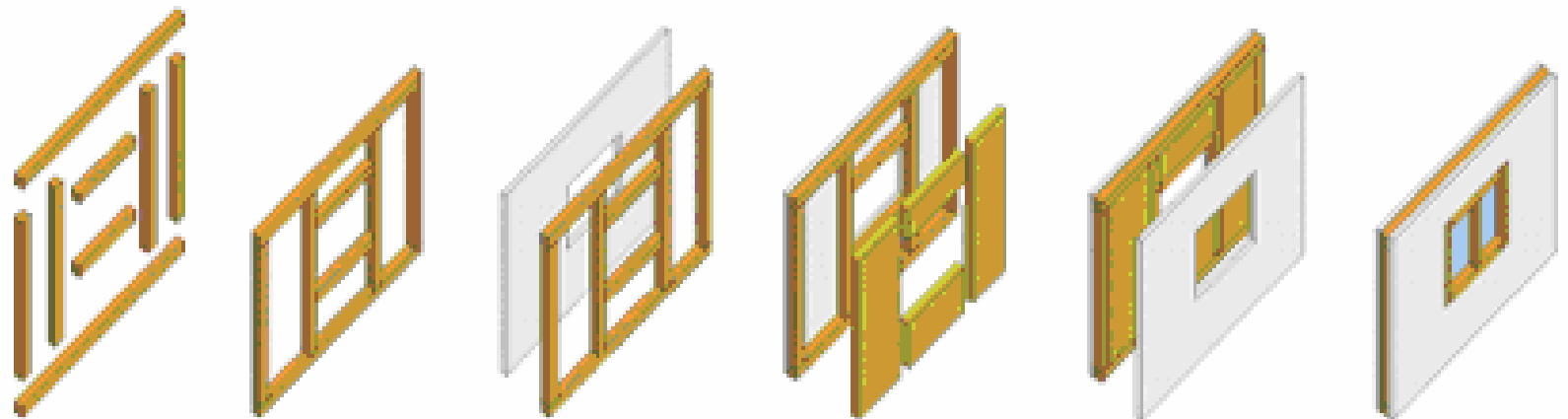


- kiln dried 15% humidity
- fingerjointed
- endcutted
- plained
- standardised dimensions
- standardised statics

KVH =
„Konstruktions-Voll-Holz“

KVH Application field

- Wooden frames, walls
- Industrial production of prefabricated houses
- Wooden roofs
- Visible wood constructions, Car-Ports, Pergola
- Enlargements of buildings



Prospected Customers

- Timbertraders, Importers
- Warehouses (building materials)
- Prefabrication-housing companies
- Carpenters
- DIY Markets
- Joinery Machine-Users (Hundegger, Weinmann, Schmidler)

KVH Dimensions:

	80	100	120	140	160	180	200	220	240	260	280	300
50			■	■	■	■	■	■	■			
60	■	■	■	■	■	■	■	■	■	■	■	■
80	■	■	■	■	■	■	■	■	■	■	■	■
100		■	■	■	■	■	■	■	■	■	■	■
120			■	■	■	■	■	■	■	■	■	■
140				■	■	■	■	■	■	■	■	
160					■		■	■	■			

■ standard

■ special dimensions

Special dimensions produced after inquiry

KVH Assortment:

	■ Standard	■ after inquiry
■ wood	Spruce Spruce/Fir	Douglas fir, Pine
■ length	13 m or Consignment	Up to 16,20 m
■ qualities	Si (Visible) NSi (Non Visible, Industrial)	
■ transmission	Whole truck oder waggon	At least 10 cbm per order
■ packaging	Wrapped in foil and with etiquette per package	

KVH Qualities:

	Visible	Non visible
Sorting class	S 10 TS (C24)	S 10 TS (C24)
Humidity	15% (+-3%)	15% (+-3%)
Dimension Stability	+ - 1mm	+ - 1mm
Wane, rough edge	Not allowed	Measured diagonally max. 10% of the smaller cross section
Knots	Black, loose knots not allowed; single knots or parts of knots up to max. 20 mm diameter allowed	DIN 4074-1, Sorting class S10

KVH Qualities:

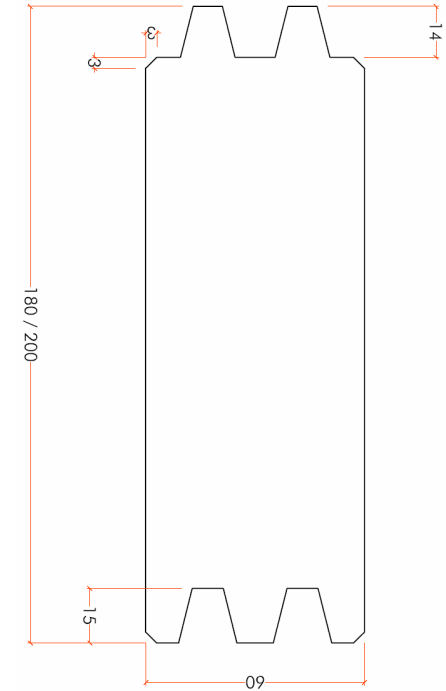
	Visible	Non Visible
Knot size	A \leq 2/5, max 70 mm	A \leq 2/5, max 70 mm
Annual ring width	Up to 6mm	Up to 6mm
Cracks	Crack width \leq 3% of diameter	DIN 4071-1
Staining (Discolouring)	Not allowed	Blue colour allowed
Insects	not allowed	Single worm traces up to diameter of 2 mm

KVH Qualities

	Visible	Non Visible
Surface Condition	Side dressed, egalized and chamfered on 4 sides	Planed/side dressed and chamfered on 4 sides
Processing of ends	Squared ends	Squared ends

Blockhouse-Profile

■ Thickness	38/60 / 80 / 100 / 120 mm
■ Widthness	100 to 260 mm
■ Quality	Double side: visuable One side : visuable Double side: industrial
■ Length	Each length: 2,4 - 16 m



Certifications

Member of the european association of KVH producers



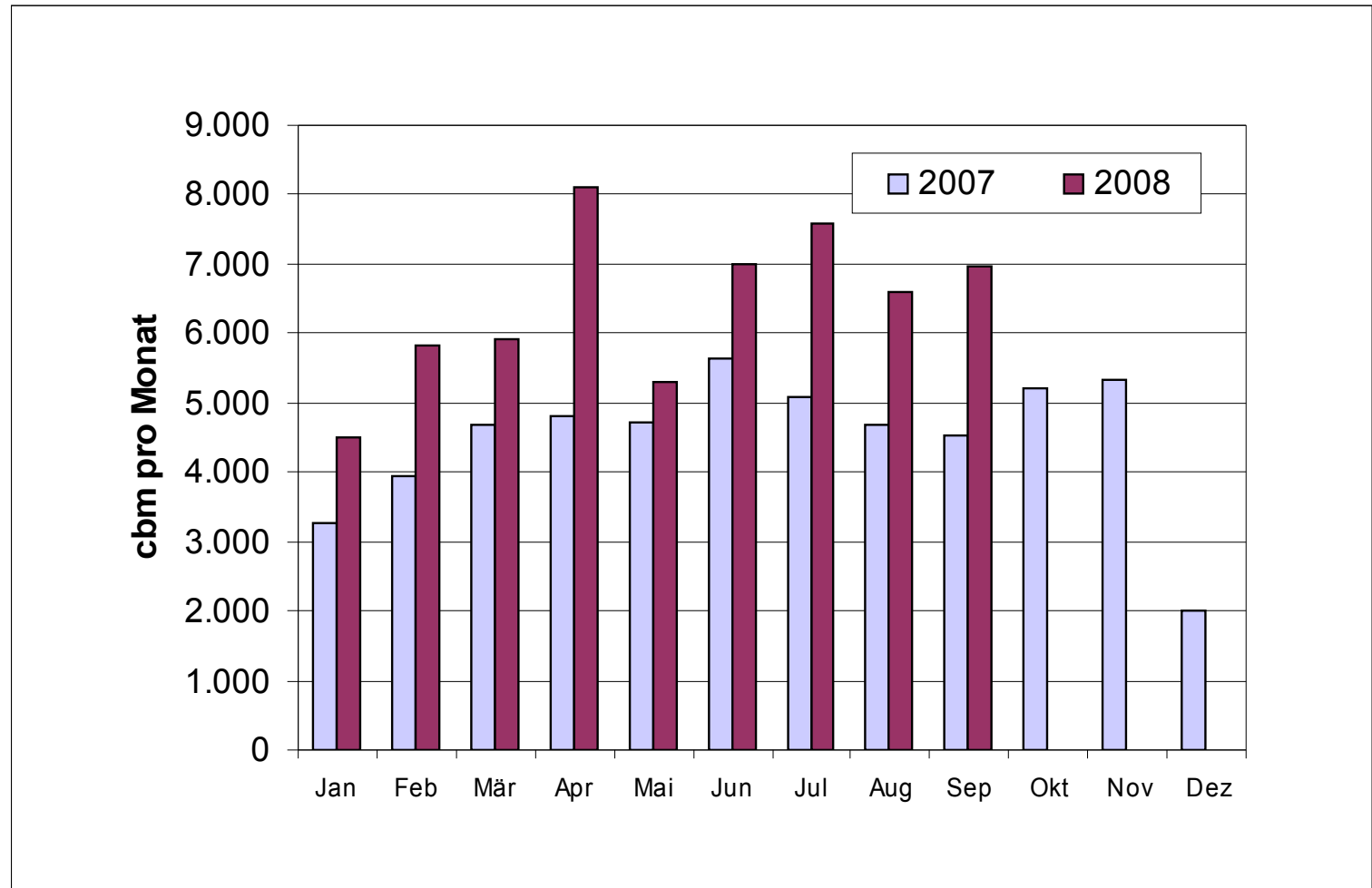
External supervising (Ü-Zeichen)



Timber from sustainable forest industry (as FSC)



Sales quantity



Quantities per country

